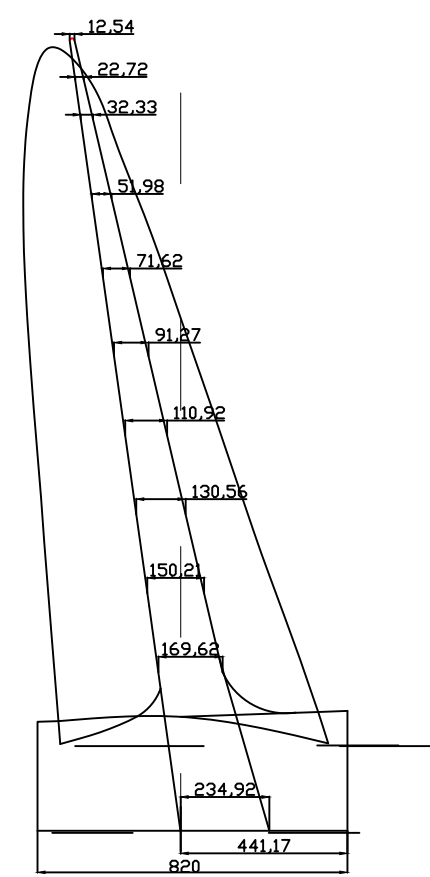


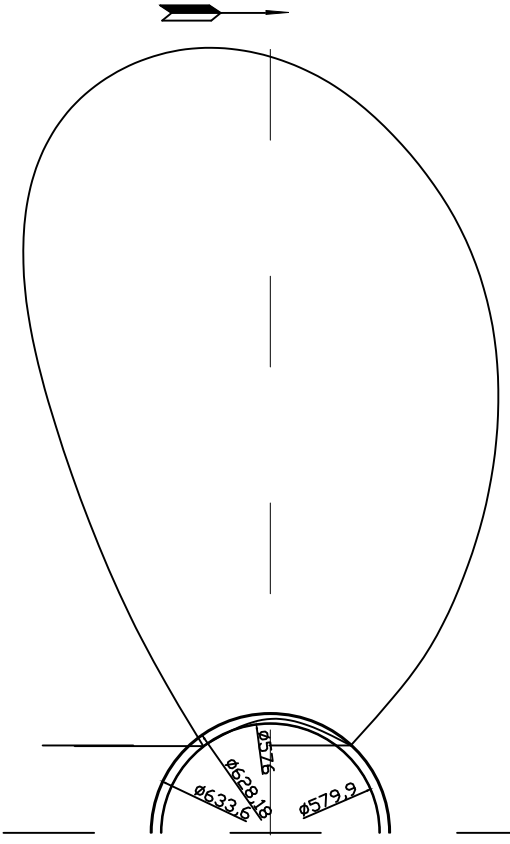
层号	坐标 (mm)	X	Y	Z	...
0.2	X	0.1766338	35.32678	52.99014	88.31691
	Y	89.398	87.994	101.401	112.282
	Z	41.15419	32.32931	25.4562	16.9708
0.3	X	0.2062896	41.25172	61.87758	103.1293
	Y	52.522	77.807	89.662	99.266
	Z	36.39004	28.58681	23.5093	15.0662
0.4	X	0.2311583	46.23166	69.34749	115.8791
	Y	45.6456	67.6207	77.92866	86.27018
	Z	26.86173	21.10169	16.6158	11.077
0.5	X	0.2541868	50.83736	76.25603	127.2186
	Y	38.7695	57.43425	66.18508	73.27436
	Z	26.86173	21.10169	16.6158	11.077
0.6	X	0.2867029	57.35411	86.03126	143.517
	Y	30.98216	45.1975	52.83192	59.00274
	Z	26.86173	21.10169	16.6158	11.077
0.7	X	0.3319468	66.52161	99.71628	166.1036
	Y	21.4434	30.66406	37.31152	42.81532
	Z	26.86173	21.10169	16.6158	11.077
0.8	X	0.3870284	70.05168	104.9543	175.0059
	Y	10.88472	16.81948	21.61394	25.96783
	Z	26.86173	21.10169	16.6158	11.077
0.9	X	0.459299	77.94335	115.8412	188.0087
	Y	2.671438	6.791246	10.13859	13.16407
	Z	26.86173	21.10169	16.6158	11.077
0.95	X	0.5231062	84.13841	124.6031	200.6971
	Y	0.7524	2.46411	3.762	4.96584
	Z	26.86173	21.10169	16.6158	11.077

螺旋桨直径	D=	4.180	m
螺距比	P/D=	0.682	
螺距	P=	2.850	m
型式		MAU	
叶数	Z=	4	
盘面比	A _d =	0.562	
纵倾角	e =	8	°
螺旋桨效率	η ₀ =	0.525	
设计航速	V _{max} =	14.000	kn
毂径比	d _h /D=	0.180	
旋向		右旋	
材料		铝镁青铜	
重量		5768.120	kgf
惯性矩		59398.950	kgf*cm*s ²

侧视图

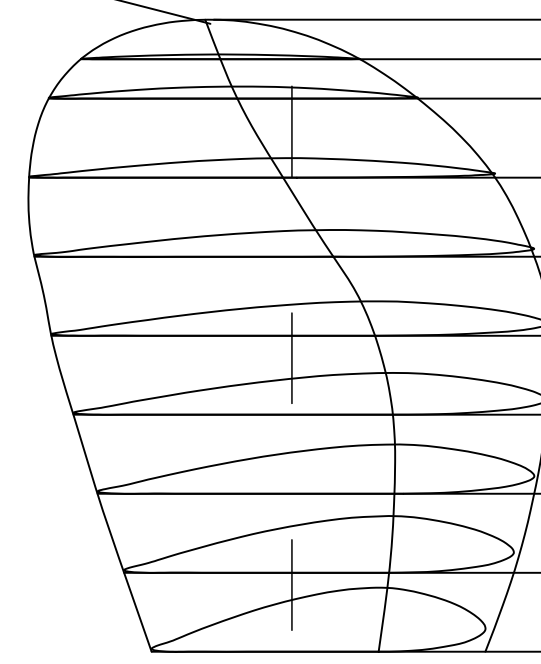


正视图
转向



最大厚度线

伸张轮廓图



螺距分布

R=2090.00	P=2850
r=1985.50	P=2850
r=1881.00	P=2850
r=1672.00	P=2850
r=1463.00	P=2850
r=1254.00	P=2850
r=1045.00	P=2850
r=836.00	P=2850
r=627.00	P=2850
r=418.00	P=2850

10000DWT成品油船					大连理工大学船舶与海洋工程学院		
<h1 style="text-align: center;">螺旋桨</h1>					杨波 200942005		
标记	数量	修改单号	签字	日期	图样标记	质量/kg	比例
设绘		杨波	描图				1:20
校对			描校				
审核							
标检							
审定			日期	2013.5.18	共 1 页	第 1 页	

PRODUCED BY AN AUTODESK STUDENT VERSION

PRODUCED BY AN AUTODESK STUDENT VERSION